

Ashdale Range

AG Model Boiler 40 – 55% moisture content

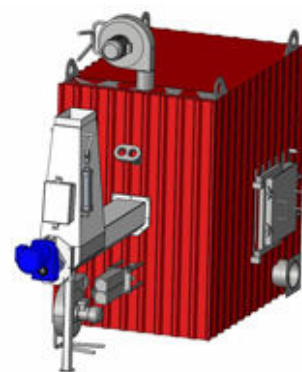
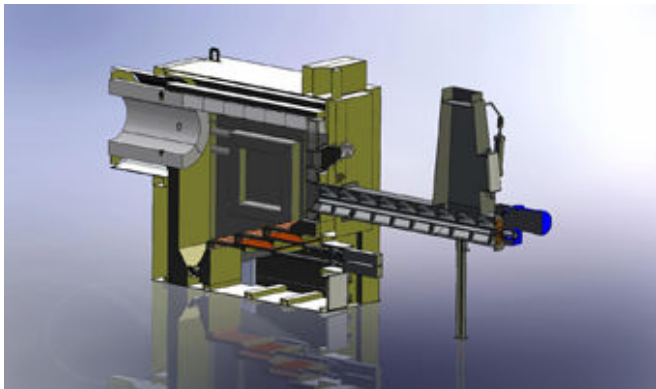
AGD Model Boiler water cooled bed up to 35% moisture content

AG Usable combustibles chippings, sawdust and crushed bark at 40 -55% moisture content

AGD Usable combustibles chippings, grass, pellet/ briquettes at up to 35% moisture content



- ▶ Boiler range 500kW - 7MW
- ▶ Angular grate front boilers are designed to operate in heating systems by firing chippings, sawdust and crushed bark with a moisture content between 40 and 55 % AG Model up to 35% AGD Model
- ▶ automatic system controls operate the burning process and boiler functioning
- ▶ constantly controlled combustion temperature within furnace
- ▶ maximal dimension of woodchips - 50x40x10 mm;
- ▶ irregular sized wood particles up to 150mm can be accommodated with belt feed and hydraulic ram system

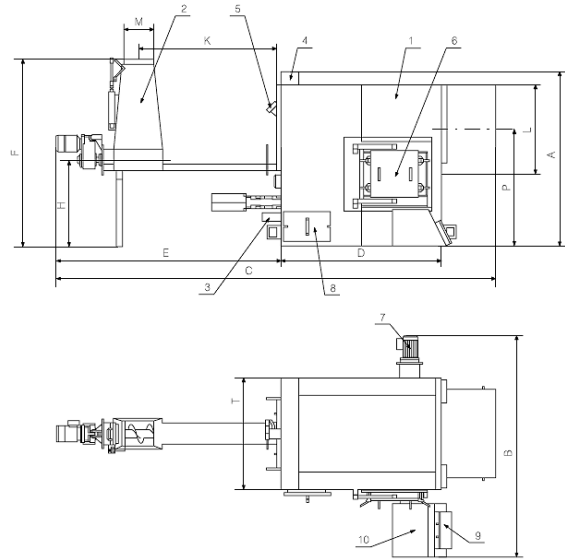


Ashwell Engineering Services Ltd., Unit 12, 35 Pinfold Road, Thurmaston, Leicester LE4 8AT

Tel: 0116 260 4050 Fax: 0116 260 4445 Email: info@ashwellengineering.com

Model AG 600 Output 500 – 600 kW
Moisture Content 40% - 55%

1. Carcass
2. Surge bin with spiral conveyer
3. Primary air supply
4. Secondary and tertiary air supply
5. Inspection hatch
6. Furnace door
7. Ash conveyer drive
8. Ash door
9. Ash door
10. Ash output



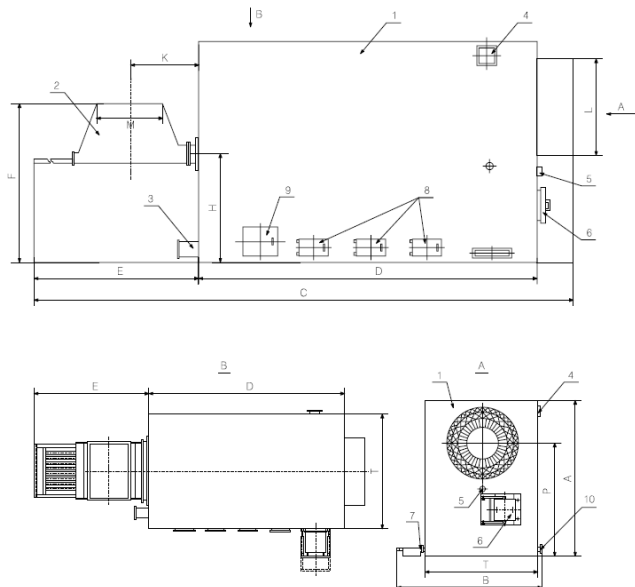
Dimensions	A	B	C	D	E	F	H	K	L	M	P	T
AG 600	1940	2475	4880	2435	2445	2090	970	1525	Ø 1850	320	1300	1250

Models AG 1000 – AG 7000

Outputs 1 – 7 MW

Fuel Moisture Content 40% - 55%

1. Carcass
2. Surge bin with hydraulic pusher
3. Primary air supply
4. Secondary and tertiary air supply
5. Inspection hatch
6. Furnace door
7. Ash conveyer drive
8. Ash door
9. Ash door
10. Ash output



	A	B	C	D	E	F	H	K	L	M	P	T
AG 1000	2675	2850	7200	3940	2760	2425	1500	855	Ø1370	950x800	1780	2130
AG 1500	3000	3010	7200	3940	2760	2480	1640	895	Ø1510	950x1060	2000	2290
AG 2000	3510	3385	7200	3940	2760	2480	1640	895	Ø1510	950x1360	2500	2630
AG 2500	3700	3520	8030	4770	2760	2680	1840	895	Ø1610	950x1360	2600	2760
AG 3000	3900	3855	8030	4770	2760	2680	1840	895	Ø1610	950x1712	2800	3095
AG 4000	4100	4495	8030	4770	2760	2680	1840	895	Ø1770	950x2340	3000	3735
AG 5000	4400	4495	8870	5610	2760	2840	2000	895	Ø1770	950x2340	3300	3735
AG 6000	4500	4410	10720	7185	2760	3470	2630	895	Ø1860	950x1712	3200	3330
AG 7000	5300	4995	9580	6320	2760	3270	2400	895	Ø1860	950x2600	3950	4235